

DCYF Juvenile Rehabilitation: A Wholistic Approach to Supporting Young People

May 4, 2026

Children's Justice Conference, Spokane Washington

Original Date: April 08, 2026 | Revised Date: Month XX, 20XX

Juvenile Rehabilitation | Approved for distribution by Ryan Pinto, Director of Community Programs

www.dcyf.wa.gov



Washington State Department of
CHILDREN, YOUTH & FAMILIES

Presenters

Lauresa Hart, Community Transitions
Administrator

Marie Moran, Community Reentry
Services Manger

Erika Rosales, Community Facility
Administrator

Haley Stredwick, Mental Health and
Sex Offense Specialist

Chris Thompson, Community Assisted
Reentry Specialist



What to expect

- Background
- Community Facilities
- Community Transition Services (CTS)
- Functional Family Parole Aftercare (FFP)
- Community Assisted Reentry (CAR)
- Resources available
- Discussion/Q&A



Pathways to Community Reentry

Four pathways for young people in JR:

1. Community Facility (group home)
2. Community Transition Services (CTS) - up to the last 18 months of residential obligation in the community on electronic monitoring
3. Parole Aftercare through the Functional Family Parole Services Model
4. Community Assisted Reentry (CAR), voluntary services for 12 months for those young people *without* an obligation to parole aftercare, Juvenile Court Probation, or DOC

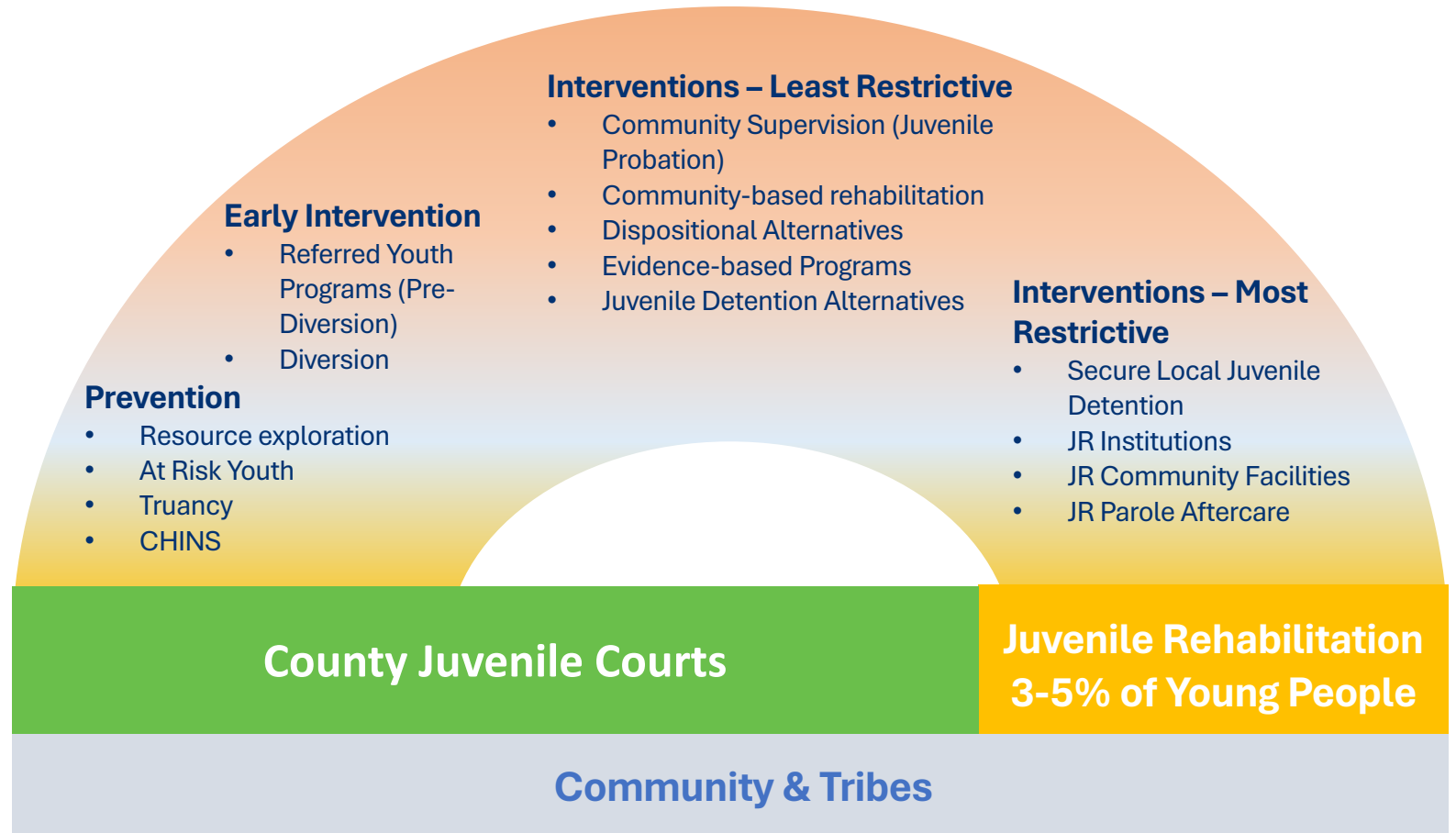


Washington Juvenile Justice System Continuum

90-95% of young people impacted by the criminal justice system in WA State are supported within their local community programs.

Shared Goal:

Public safety while providing rehabilitation to help youth become successful adults, return to the community, and avoid future crimes.



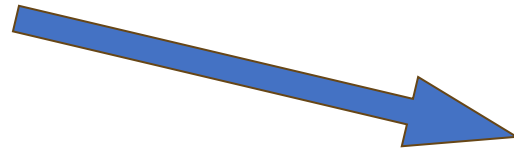
Juvenile Rehabilitation (JR) Continuum of Care



Residential Care: 376 admissions in FY25
Average Length of Stay: 370 days FY25

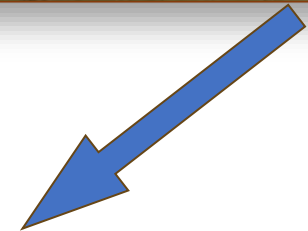
Secure Facilities

- Green Hill School, Chehalis
- Echo Glen, Snoqualmie
- Harbor Heights, Aberdeen



Community Facilities

Woodinville
Lakewood
Olympia
E. Wenatchee
Ephrata
Kittitas
Yakima
Richland



Community

- Community Transition Services (under sentence)
- Parole Aftercare (supervision)
- Community Assisted Reentry (voluntary)



JR Residential Demographics

- 94.6% male, 5.4% female
- Reported Ethnicity:
 - American Indian/Alaska Native 2.2%
 - Asian/Pacific Islander 4.2%
 - Black/African American 30.7%
 - Hispanic/Latino 23.3%
 - Unknown 2.2%
 - Multiracial 8.9%
 - White 28.5%
- 63.8% are ages 18 and over
- 35.1% have DOC Sentences
- 90.6% have a Behavioral Health diagnosis



Data Source: OIAA. Characteristics of Residential Population Report (2/20/2026)



Washington State Department of
CHILDREN, YOUTH & FAMILIES

How do we plot a path for young people in JR?

Connecting the dots...

- Validated Assessment
- Treatment Planning
- Future Planning (Reentry)
- Accountability and Community Safety



Integrated Developmental Evaluation & Assessment (IDEA)

- Less biased assessment
- Administered within 30 days upon intake and every 120 days while in JR
- Certified assessors with quality assurance
- Adapted from the Juvenile Court Assessment Tool (J-CAT)
- Need domains, tracking changes over time
- Validated every three years



Future Plans

Written in 1st person

Reflects their goals for education, treatment, living arrangements, community involvement, employment, family and friends

Includes action steps to achieve goals

Ties in support networks in JR and the community

Future Planning Meetings

- Incorporate young people, family, and region staff early on
- Reflect young person's goals
- Focus on nationally recognized reentry domains including:
 - ✓ Family/Living Arrangements, Relationships, Mental Health and Skills, Substance Abuse, Education, Vocation and Employment, Use of Free Time and Recreation
 - ✓ Directly linked to the IDEA & Future Plan domains
- Occur regularly during time with JR



JR Secure Facilities

- Green Hill School
- Echo Glen
- Harbor Heights



Harbor Heights, Aberdeen

- Medium/maximum therapeutic juvenile facility, staffed by DCYF within a DOC campus
- Focus on leadership development and peer mentorship
- Older males, 18 - 25
 - Transfer from Green Hill
 - No serious behavioral violations in the 90 days prior to transfer
- Two 23-bed pods
- Living space with TVs in all rooms
- Career and vocational training
- Cognitive behavioral therapy program (Roca ReWire)
- Two indoor and outdoor rec rooms and basketball
- RNs on site



Billy



Washington State Department of
CHILDREN, YOUTH & FAMILIES

Original Date: Month XX, 20XX

Revised Date: Month XX, 20XX

Division

Approved for distribution by Name, Title

www.dcyf.wa.gov

Green Hill School, Chehalis

Medium/maximum juvenile facility for older males, ages 18-25, with juvenile and adult sentences

- 193 funded beds, at 200
- Intake screening and assessments to determine treatment, medical, and education needs
- Medical, dental, vision, behavioral health treatment services
- Cognitive/behavioral-based programs
- Individual treatment and reentry plans
- Treatment for youth with a sex offense
- Building strong partnerships with families
- Youth Voice and statewide juvenile justice advocacy
- Cultural diversity programs
- Tattoo removal
- Transformational mentoring



Green Hill School Programs

- Academic school through Centralia School District
- Centralia Community College – associates and bachelor degree programs; 30% of young people enrolled
- Vocational programs in auto body and repair, welding, construction, and building trades
- Pre-apprenticeship and trades education
- Financial mentoring
- Personal fitness/nutrition



Community Facilities

Community Facility Transition: Best Practice Approach

- Best Practice Recommends:
- Transition and Reentry begin at intake
- Youth reside in least restrictive environment
- Equitable access to community facility
- Youth can 'practice' in the community with therapeutic staff support
- Behaviors are viewed as opportunities not problems



Program Readiness

- Young people are ready for transition when they are:
 - participating in programming
 - a positive influence in their unit or wing
 - connected to treatment
 - staying clean and sober
 - participating in future planning
 - fully aware of the expectations of the CF/CTS program
 - involving family or natural supports in their treatment; and
 - have met all eligibility criteria



Region 1



Canyon View Community Facility

- *East Wenatchee*, up to 14 youth
- Serves males 16-25 yr old
- Wenatchee Valley Community College and Eastmont School District



Sunrise Community Facility

- *Ephrata*, up to 14 youth
- Serves males 16 -25 yr old
- Big Bend Community College and Ephrata School District



Region 3/4

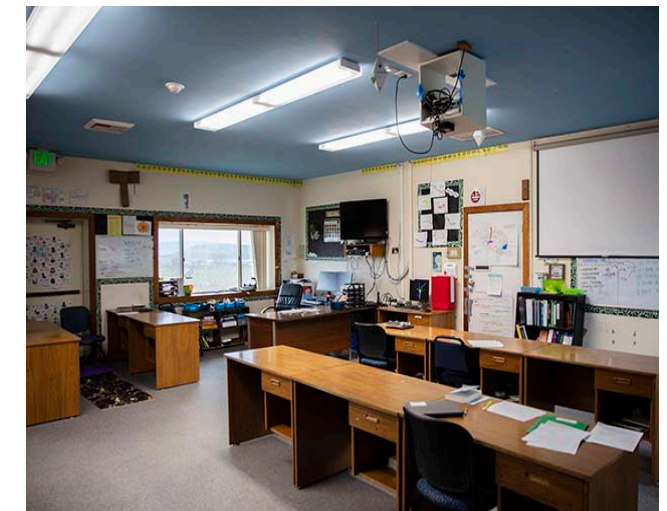
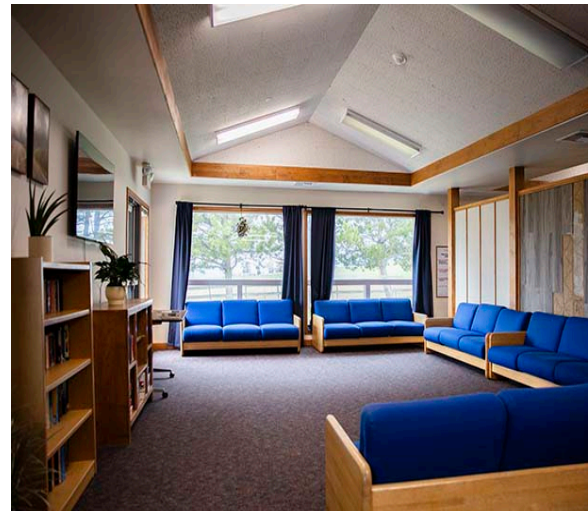
Woodinville Community Facility

- *Kirkland*, up to 14 youth
- Serves males 16 - 25yr old
- North Shore School District and UW Bothell, Bellevue CC and Cascadia CC.



Parke Creek Community Facility

- *Kittitas*, up to 14 youth
- Serves males under age 18
- Kittitas School District and Central Washington University



Region 5/6



Oakridge Community Facility

- **Lakewood**, up to 16 youth
- Serves males ages 17 -25 yr old
- Clover Park Technical College



Touchstone Community Facility

- **Olympia**, up to 16 youth
- Serves males 16 – 25 yr old
- South Puget Sound College, Olympia School District, Gravity for GED and credit retrieval



Community Facility Resources



Education



Employment



Mental Health Services



Medical/Dental Services



SUD



Volunteer Programs



Community Transition Services



Community Transition Services (CTS) Supports and Connects



- Therapeutic supports and connections to services
- Independent living skills - driving, building credit, budgeting
- Electronic tools to support accountability and monitoring
- Up to last 18 months of residential sentence



CTS Youth Experience

- Weekly face-to-face meetings with community counselor
- Daily phone contact Monday – Friday
- Random substance use screens
- Increased contact as required
- Connected to behavioral health supports in the community
- Working or attending school
- Learning and practicing independent living
- Accountable with electronic monitoring device
- Maintaining a 24/7 schedule



Status of CTS Participants

Since program launch (May 2024) and as of April 5, 2026:

- 47 total participants
- 29 of 37 completed CTS successfully (78%)
- Statewide capacity is 22



Parole Aftercare with Functional Family Parole



Parole Aftercare

Parole Aftercare is a family centered, strengths-based supervision approach using the Functional Family Parole (FFP) model. Parole ranges from 20 weeks to three years, depending on offense.

| Fiscal Year | # released | # with Parole |
|-------------|------------|---------------|
| FY23 | 239 | 116 (49%) |
| FY24 | 281 | 132 (47%) |
| FY25 | 310 | 164 (53%) |

Parole Types

Intensive Parole (IP)

- Cut off score for IP eligibility
- Murder 1 & 2
- Youth releasing as a Level III (first six months of the YSO obligation)
- Assault 4 with Sexual Motivation if they meet the risk cut off score

Youth who have Sexually Offended Parole (YSOP)

- Any sex offense except for Assault 4 with Sexual Motivation

Parole Types

Auto Theft Parole (ATP)

- Theft of a Motor Vehicle 1
- Possession of a Stolen Motor Vehicle
- Taking a Motor Vehicle without Owner's Permission 1

Firearm Parole (FP)

- Unlawful Possession of a Firearm
- Possession of a Stolen Firearm
- Theft of a Firearm
- Drive-By Shooting

To Other State (TOS) Supervision

From Other State (FOS) Parole



Services Provided in Parole Aftercare

- Referrals for treatment services including:
 - Mental health
 - Sex offending behavior
 - Physical health
 - Substance use
- Employment readiness
- Education
- Legal advocacy
- Housing supports
- Family counseling
- Independent living skills
- Mentoring and cultural programs through local service agreements, contracts, and MOUs
- Accountability through parole conditions and graduated responses for violations

Functional Family Parole (FFP)

- Developed from the Functional Family Therapy model
- All services delivered in the home, with their family involved, unless young person is over 18 or living independently
- FFP counselors trained in basic family counseling skills, verbal de-escalation, and trauma informed approach
- FFP emphasizes building trust and relationship to motivate parole young people to participate in treatment and comply with conditions
- Structured parole conditions to provide clear accountability
- Balance with accountability and treatment

FFP Phases

Engagement
and
Motivation

Support and
Monitor

Generalization



ENGAGEMENT

GOAL: Develop credibility, build trust, show respect, create relationship.

SKILLS REQUIRED: Immediate responsiveness, persistence, matching, humor, genuineness, listening, nonjudgmental attitude.

FOCUS: Developing an effective relationship between you and them, staying relationally focused, matching to individual and cultural characteristics.

ACTIVITIES: High availability, matching language and superficial qualities, contact as many family members as possible, schedule frequent meetings as necessary, use/update Future Plan. Follow through. Listen!

MOTIVATION

GOAL: Create hope, reduce individual blame of self and others, they see/feel a reason for change (something different).

SKILLS REQUIRED: Relationship & interpersonal skills, nonjudgmental responses, trauma informed responses, courage and resiliency, non-defensiveness.

FOCUS: Relationships in the youth/family/young adult's life, separate blaming from responsibility, strength based, honoring equity and diversity.

ACTIVITIES: Interrupt highly negative interactions and blaming. Use counseling skills to change the focus in the room and meaning of interactions between them. Schedule meetings as frequently as necessary. Reinforce Future Plans and skills learned at facility. Help connect them to community supports.

Support and Monitor

Goals:

- Move to less active role
- Support family and change agent
- Ensure program matches
- Eliminate barriers

Activities:

- Monitor parole conditions
- Support services and activities
- Encourage and reinforce family members (and providers)
- Be an advocate for effective services/programs

Focus:

- Family and youth moving forward, reconnecting
- Promoting DBT skill generalization
- Providing a different experience



Generalization Phase

Goals:

- link to community/natural supports
- reinforce positive change
- help generalize change

Activities:

- engage natural supports
- maintain community contacts
- maintain active 'case manager' role
- ensure sufficient resources/access

Focus:

- relationships in the community
- using assessment knowledge
- self-sufficiency



Six Areas of Quality Assurance



Training



Session notes and contacts



Field Co-Visits



Staffing/Consultation

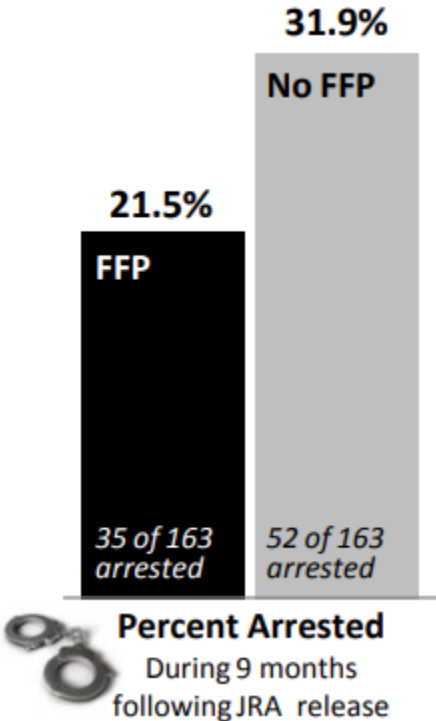


Monthly reporting



Performance Assessments

Parole Effectiveness



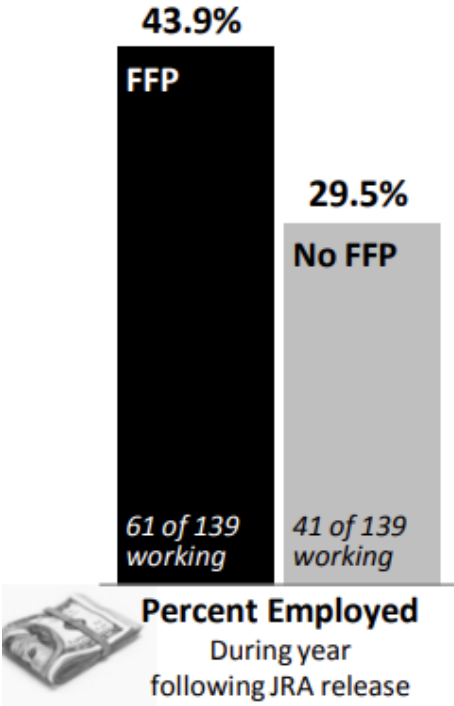
Effects of Functional Family Parole on Re-Arrest and Employment for Youth in Washington State

EXECUTIVE SUMMARY

Barbara A. Lucenko, PhD, Lijian He, PhD, David Mancuso, PhD, and Barbara Felver, MES, MPA
In collaboration with Bob Salsbury, Juvenile Rehabilitation Administration

NOTE: See *Technical Appendix* for Methods and Definitions: <http://www.dshs.wa.gov/rda/>.

Youth released from a residential obligation between July 2008 and December 2009.



Youth and Family Feedback



My parole has pushed me to get things done. It focuses me on meeting deadlines and gave me the extra push to stay motivated.

You guys rock. Best parole counselors around.

I feel parole has helped me feel more responsible and better with myself. I will look back at some of the advice to help me through my life for years to come.

My son has become a young man and has matured a lot since (JRCC) has been around. I'm happy to have my son back. Thanks!

Our parole counselor was a wonderful counselor who listened and talked to my son as an adult, not a child.

(JRCC) is an awesome parole counselor. She is very understanding and has tried to help in any way she could. She went over and beyond in her job.



Jazzy



Washington State Department of
CHILDREN, YOUTH & FAMILIES

Original Date: Month XX, 20XX

Revised Date: Month XX, 20XX

Division

Approved for distribution by Name, Title

www.dcyf.wa.gov

Echo Glen, Snoqualmie

- Medium/maximum juvenile facility for juvenile and adult sentences
- Younger males, up to 17
- Only secure facility for females
- Currently at 94 youth (2/20/26)
- Small sized (12-16 beds) cottages



Echo Glen Programs

- Gender-responsive programs
- Specialized treatment, including Aggression Replacement Therapy (ART) and treatment for Youth who Sexually Offend (YSO)
- Psychiatric services by the University of Washington
- Canine Connections dog training program
- Family access and involvement
- Spiritual growth (chaplaincy program)
- Youth voice and statewide partnership council work
- Campus school is operated by Issaquah School District, including GED
- Barista and kitchen program
- “MyJOB” vocational readiness and work-based learning

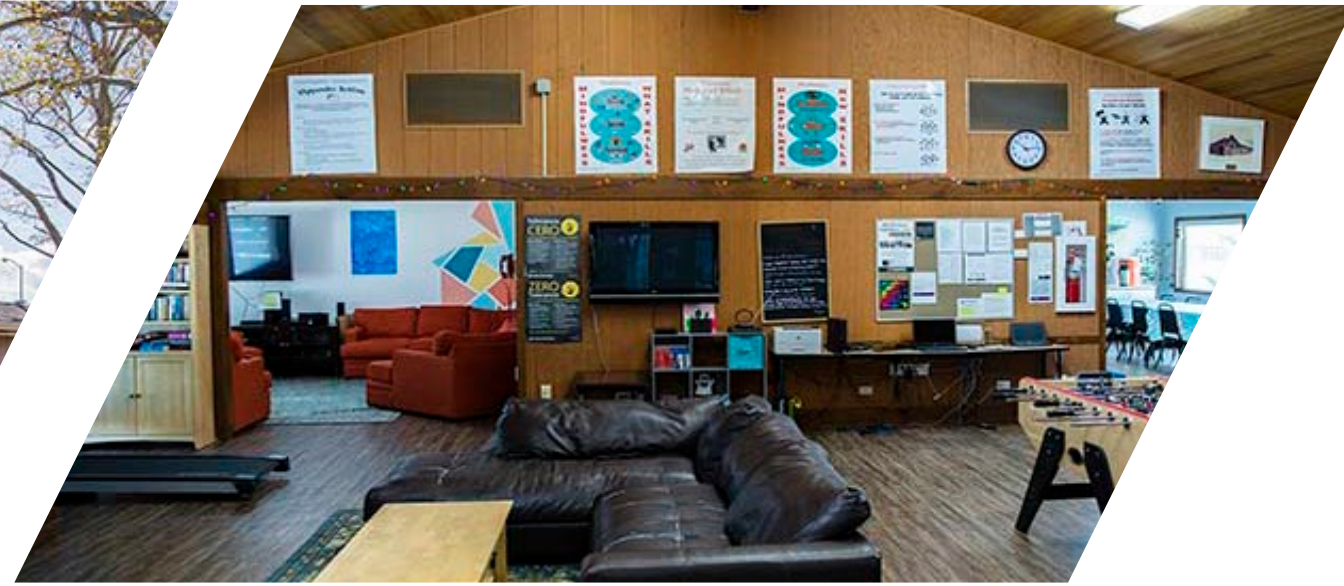


Region 2



Twin Rivers Community Facility

- **Richland**, up to 16 youth
- Serves males 16 – 25 yrs old
- Columbia Basin Community College and Richland School District



Ridgeview Community Facility

- **Yakima**, up to 12 youth
- Serves female and female identifying 12 -25yr olds
- Yakima Valley College and Yakima School District



Community Assisted Reentry



Community Assisted Reentry (CAR)

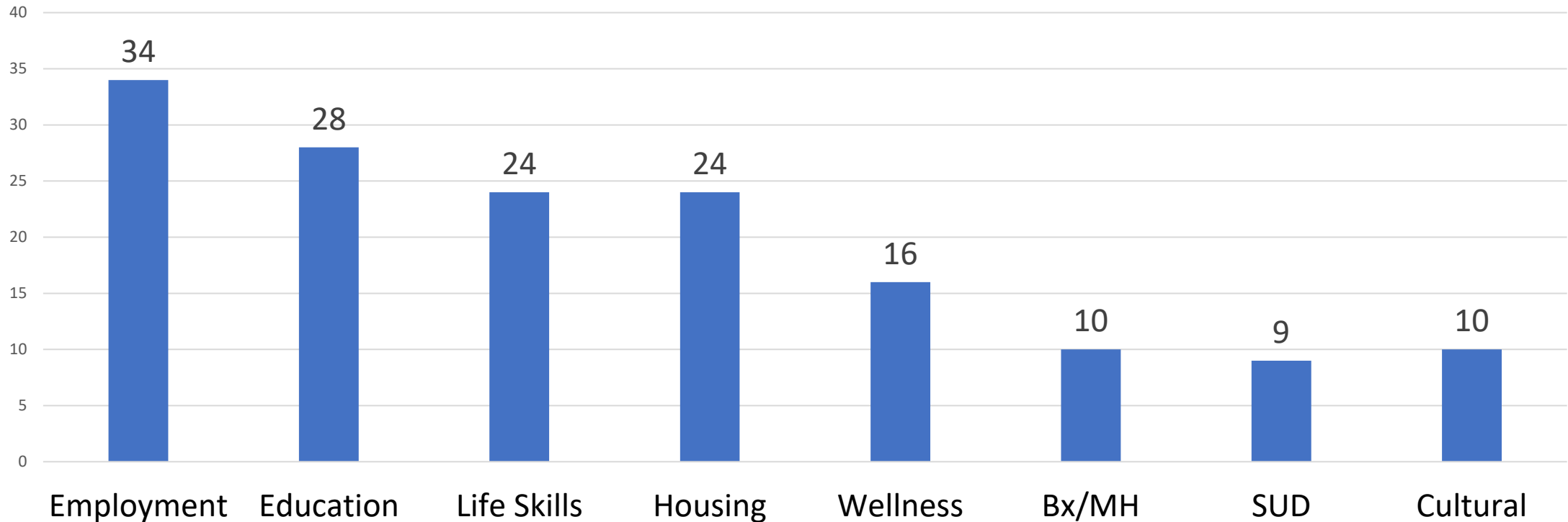
- Voluntary services for up to 12 months post release from JR.
- Eligibility - those without an obligation to JR parole aftercare, Juvenile Court Probation, or Department of Corrections.

| Fiscal Year | Average Monthly Eligible | Average Monthly Active |
|-------------|--------------------------|------------------------|
| 24 | 81 | 44 (54%) |
| 25 | 92 | 62 (68%) |



CAR Connections to Community Services

Statewide Monthly Average of Most Accessed Services for CAR Clients, July 2025 – February 2026 (FY 26)



Community Assisted Reentry by the Numbers

Statewide Monthly Averages for
CAR Community Roster, July 2025 – February 2026 (FY 26)

